

SS316 & SPECIAL ALLOYS HYDRAULIC COMPONENTS





INTRODUCTION



Oleodinamica REVA has been studying, designing and developing following components in order to meet customers' special request that cannot be solved with standard valves available on the market.

Being a components' manufacturer gives Oleodinamica REVA the possibility to follow the customer in every single requirement and to find special solutions that are not available on the market.

Particularly, the metal to metal sealing system technology, allows Oleodinamica REVA components to work at extreme low and high temperatures.

WORKING AMBIENT TEMPERATURE

- NBR -30°C / +90°C
- HNBR -40°C / +90°C
- VITON -20°C / +120°C
- FLUOROSILICON -60°C / +90°C

PRESSURE

- As maximum operating pressure, we reach 355 BARG

MATERIALS

- Internal parts are integrally manufactured in stainless steel - AISI 316 and other special alloys so that they can work with aggressive media.
- External parts are manufactured in 316L stainless steel or Exotic Materials upon request (screws A4-70, A4-80).

FLUID TYPE

- MINERAL OIL
- WATER BASED FLUID
- PHOSPHATE ESTER
- (others)

We have studied flanged interfaces in order to minimize leakages due to fittings and tubes. If needed threaded connections are available upon request.

SPECIAL VERSIONS UPON REQUEST



PRESSURE AND RETURN FILTERS

FI/FR SERIES

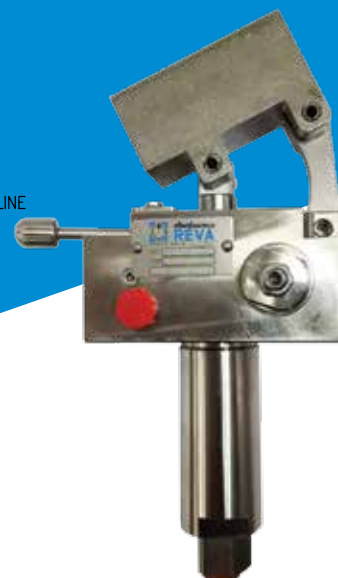
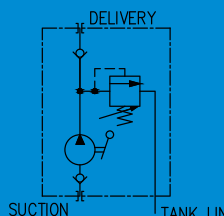
- Nominal diameter size DN6 – DN10 – DN 13 – DN25
- With or without visual indicator and by-pass valve
- Duplex version
- Absolute filtration starting from 3μ
- In-line or manifold mounting
- Filter elements can be in stainless steel or in treated steel
- Filter cartridge tube is removed through screws and not with one thread
- Special Executions upon request



HAND PUMPS

PS/PD SERIES

- With or without Relief Valve, Check Valve or Distributor
- Cubic capacity 22 cc standard – special version available
- Flangeable to the tank or manifold mounting
- Stainless Steel Lever
- The combination of special levers and cubic capacity allows high pressure values even with limited effort
- Possibility to integrate hand pump into hydraulic power unit with stainless steel tanks and concerning accessories
- Special Executions upon request



FLOW CONTROL VALVES

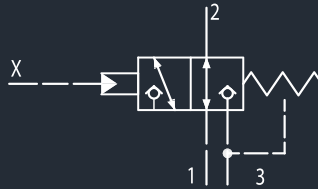
VRF SERIES

- Cartridge or Flanged Version
- Unidirectional or Bidirectional
- Integrated double unidirectional valves
- Flow rates adjusted depending on type, from 0,5 lt/min up to 450 lt/min
- Availability of one “extra-fine” flow control valve able to regulate from 0,05lt/min up to 1lt/min
- Setting handknob with locking nut (stainless steel – aluminum ABS)
- Special Executions upon request



DIRECTIONAL VALVES 3/2 2/2

VD3 SERIES

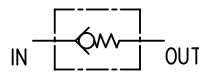


- Piloted Poppet Valve
- Nominal Diameter Size DN6-DN10-DN13-DN16-DN20-DN25, special on request
- According to IEC 61508 1÷7:2010 – SIL Safety Integrity Level, SIL 2 Certified
- Internal Pilot
- Hydraulic or Pneumatic External Pilot
- Pneumatic External Pilot (piston defined according to piloting pressure)
- Manual Pilot / Cam Pilot
- Manifold mounting or in line version design
- Zero Leakage
- Flow rate up to 450 lt/min
- Special Executions upon request



CHECK AND PILOT VALVES

VCV/VCP SERIES



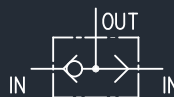
- Nominal Diameter Size DN4-DN6-DN10-DN13-DN16-DN20-DN25
- Manifold mounting
- Special Executions upon request



SHUTTLE VALVES

VFF SERIES

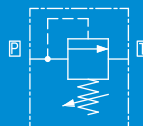
- Nominal diameter size DN6 DN10 – Special upon request
- Selection of min
- Selection of max
- In-line or manifold mounting
- Special Executions upon request



RELIEF VALVES

VRV SERIES

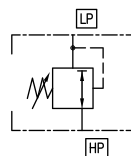
- Nominal diameter size DN4 DN10 – Special upon request
- Manifold mounting
- Direct acting relief valve
- Standard Setting or on required value
- Tamperproof and lockwire capability
- Special Executions upon request



PRESSURE REDUCING VALVES

VRP SERIES

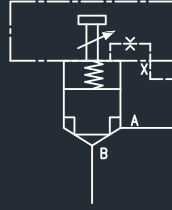
- Nominal diameter size DN6 DN10 DN13 – Special upon request
- Manifold mounting
- Zero Leakage – NO drain
- Flow rates up to 100 lt/min
- Reverse free flow
- Special Executions upon request



DIRECTIONAL LOGICAL ELEMENTS

VEL/MD2 SERIES

- Nominal diameter size DN25 DN40 DN50
- Flow control with Stroke Limiter
- Standard sizes according to ISO 7368 (DIN 24342)
- Certification according to IEC 61508 1÷7:2010 – SIL Safety Integrity Level work in progress
- Special Executions upon request



TANK ACCESSORIES

- Tank protection valve
- Flame arrester assembly
- Air Breather complete with hygroscopic salts
- Visual level complete
 - With or without isolation valve
 - Block and protection SS316
 - Silk screen
 - Borosilicate glass pipe

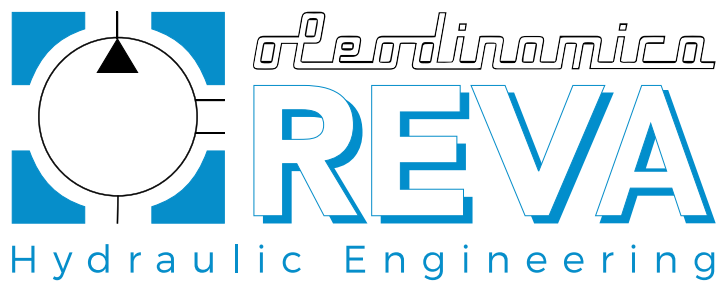


SPECIAL VERSION CARTRIDGE VALVES

In cooperation with our sister company Flucom, we develop special executions of Flucom standard valves range.

Cartridge over center - check valve - limiting pressure valve - flow regulator etc are available in extended temperature range and with special material exposed to atmosphere (i.e. AISI316L).





PEC: OLEOREVAPEC@LEGALMAIL.IT

E-MAIL: OLEOREVA@OLEOREVA.IT

WWW.OLEOREVA.COM

CONTACT

Oleodinamica REVA s.r.l.
Via Isacchi 3, 42124 Reggio Emilia - ITALY
P.IVA e C.F.: 00642890354

Tel. +39 0522 381830

Tel. +39 0522 305902

Fax +39 0522 381831

